

Proposed Solar PV Development

Preliminary Environmental Information Report

Appendix 12.3 Collision Data

Byers Gill Solar

Reference: EN010139

Revision 1 | May 2023



© JBM

JBM Solar
33 Broadwick St
London
W1F 0DQ
United Kingdom
www.jbm-solar.com

Contents

1	Collison Data	1
1.1	Introduction	1

Plates

Plate 1	A1(M1) Junction 59	1
Plate 2	A66	2
Plate 3	Stockton Road	2
Plate 4	Redmarshall	3
Plate 5	A66 Elton Interchange and Yarm Back Lane	3
Plate 6	A66, Bishopton and Old Stillington	4
Plate 7	A689, south of Sedgefield	5
Plate 8	Durham Road	5
Plate 9	A19 Wolviston	6
Plate 10	A689	6

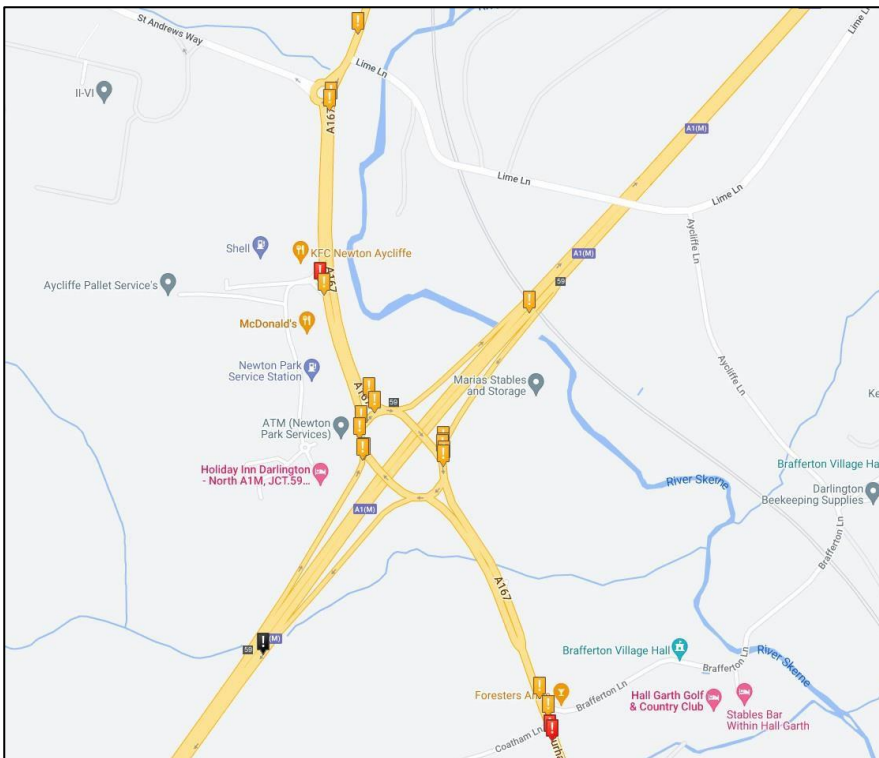
1 Collision Data

1.1 Introduction

1.1.1 This appendix presents maps of the accidents and collision data recorded between 2015 and 2019 in the study area, bound by the A1(M), A66 and A19. This appendix gives detail of collisions on the surrounding Strategic Road Network (SRN) and Local Road Network (LRN). Data has been obtained from www.crashmaps.com. “Minor” collisions are recorded with an orange symbol, “Severe” with a red symbol and “Fatal” with a black symbol.

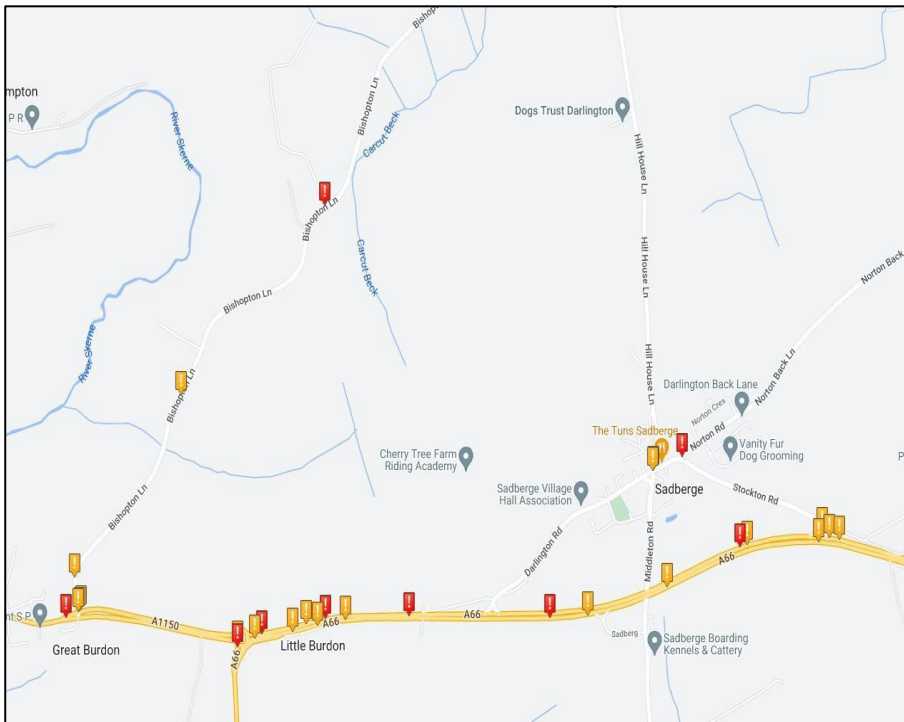
1.1.2 Plate 1 shows incidents that have taken place on A1(M) Junction 59 between the years of 2015-2019. A small number of Minor collisions took place at this junction.

Plate 1 A1(M1) Junction 59



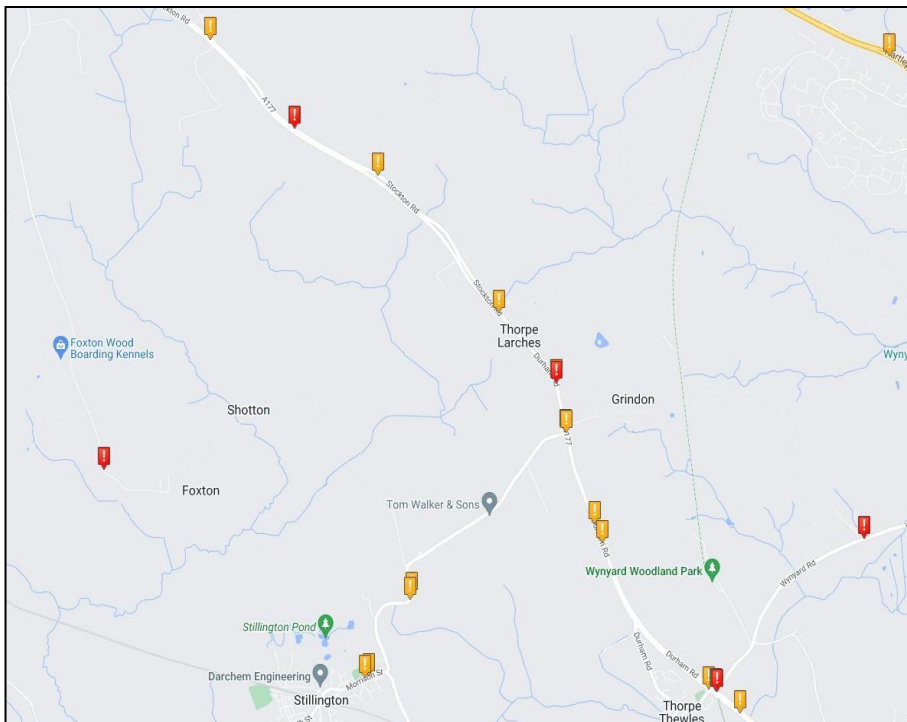
1.1.3 Plate 2 shows incidents that took place on the A66 between the Bishopton Lane junction and Stockton Road junction. A small number of Minor and Severe incidents took place in this area between 2015-2019.

Plate 2 A66



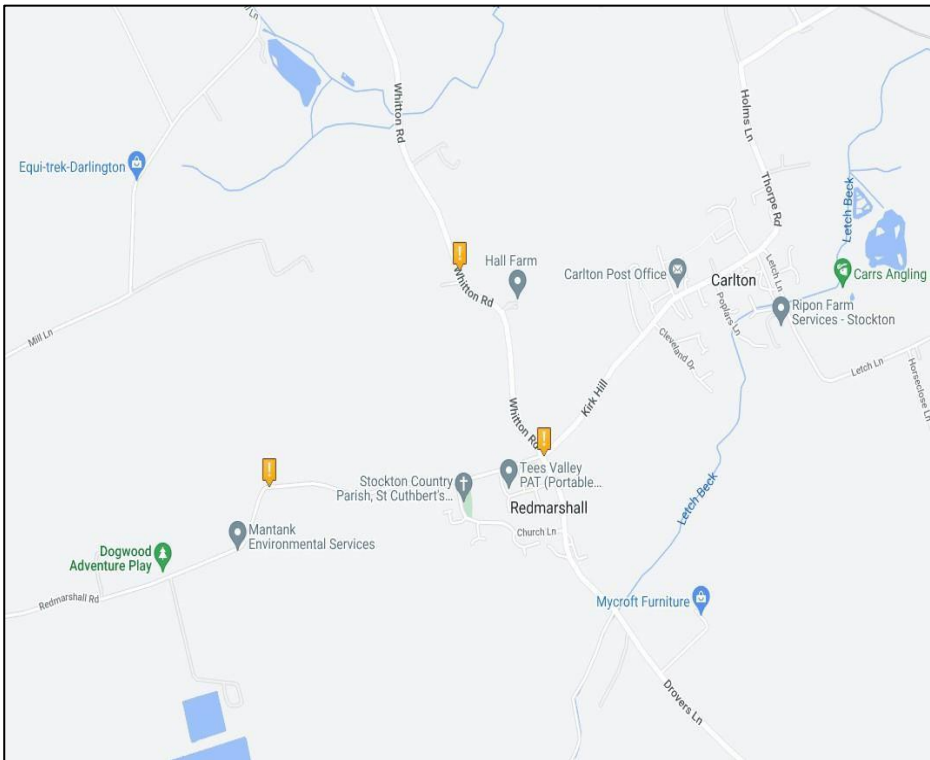
1.1.4 Plate 3 presents a small number of minor and severe incidents on Stockton Road, north of Thorpe Thewles between the years of 2015 and 2019.

Plate 3 Stockton Road



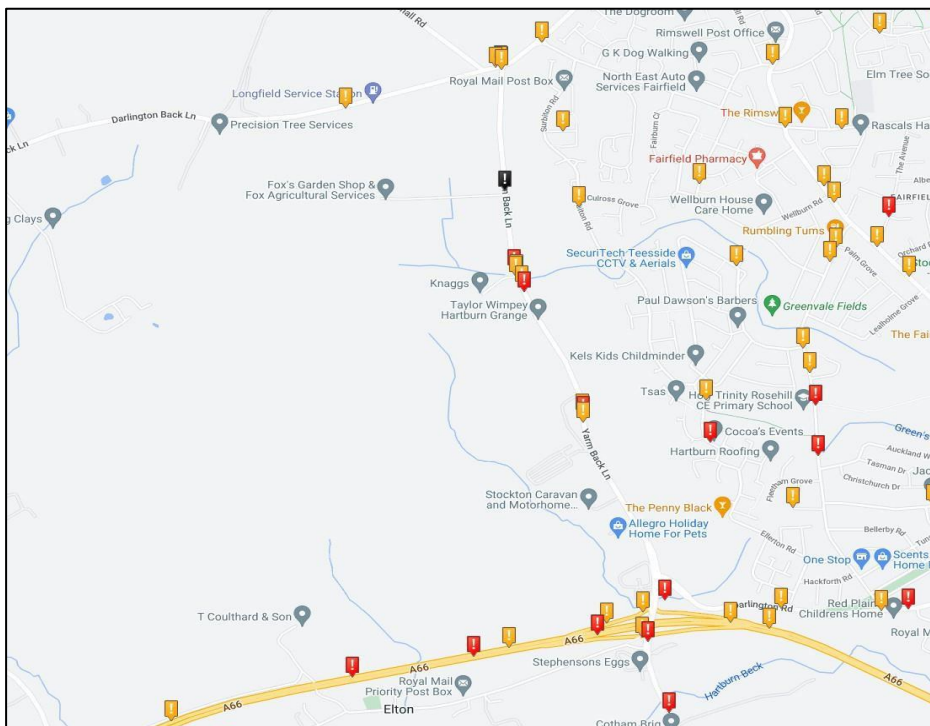
1.1.5 Plate 4 shows three minor incidents that took place near and around the village on Redmarshall between the years of 2015 and 2019.

Plate 4 Redmarshall



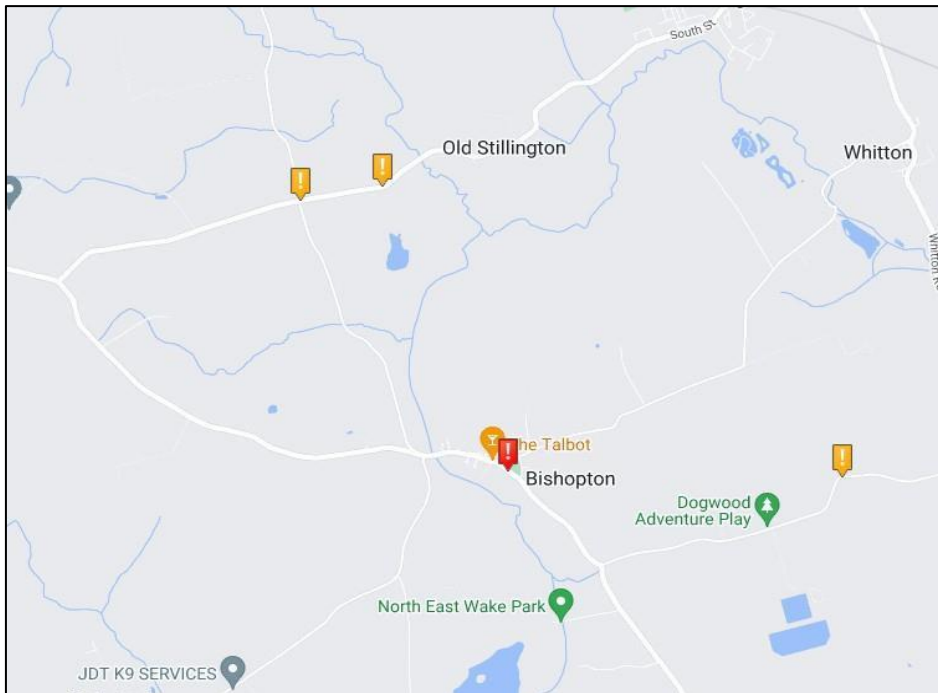
1.1.6 Plate 5 presents collision data for the A66 Elton Interchange and Yarm Back Lane.

Plate 5 A66 Elton Interchange and Yarm Back Lane



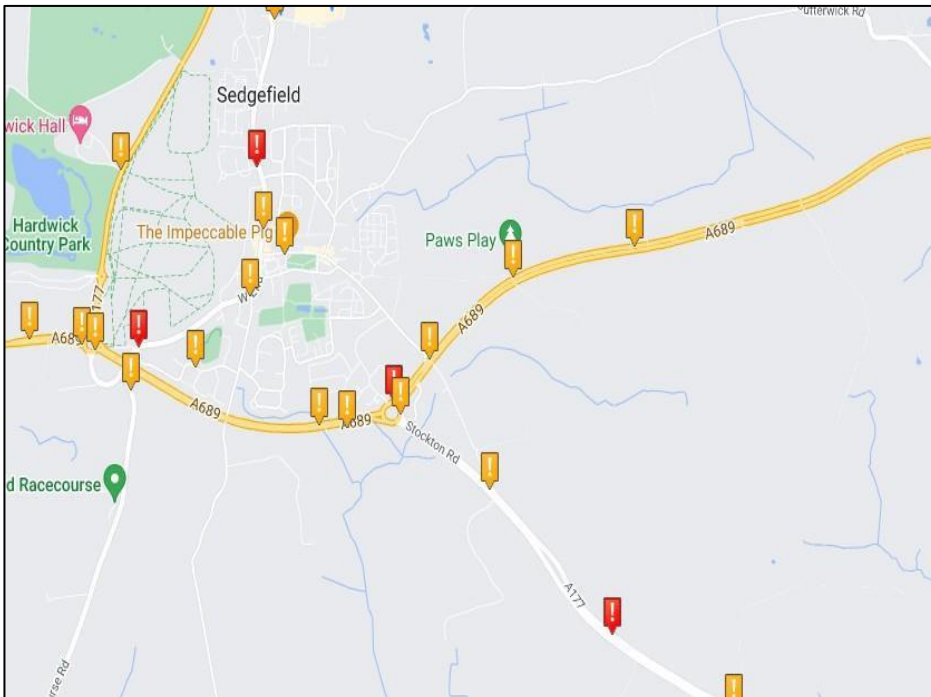
1.1.7 Plate 6 shows a negligible number of collisions in Bishopton and Old Stillington between 2015 and 2019.

Plate 6 A66, Bishopton and Old Stillington



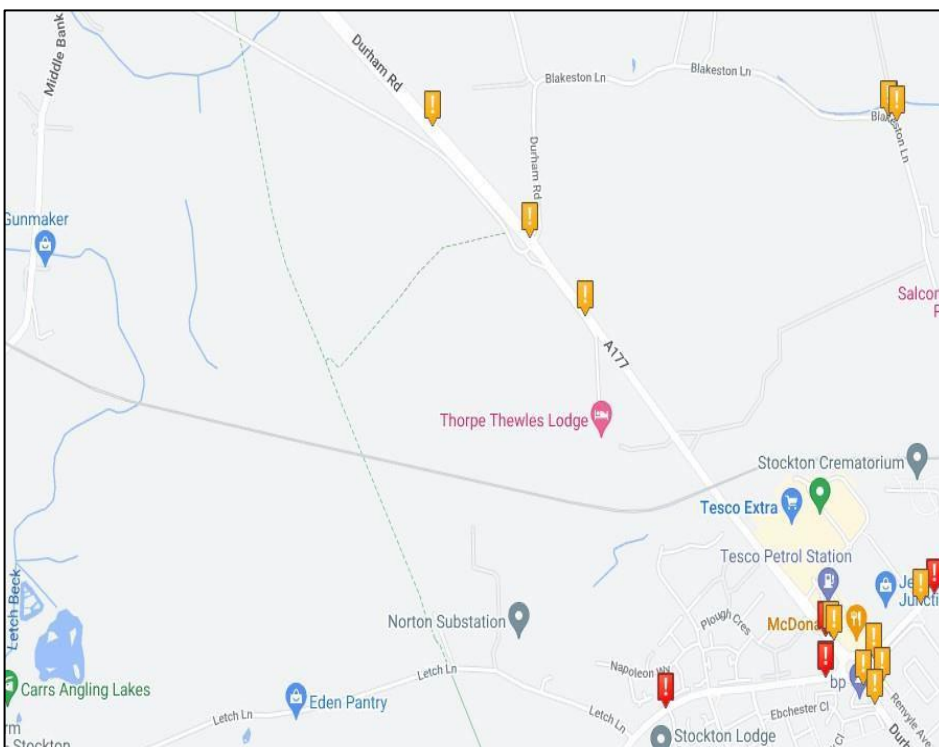
1.1.8 Plate 7 shows the negligible number of Minor and Sever collisions on the A689, south of Sedgefield, between the years of 2015 and 2019.

Plate 7 A689, south of Sedgefield



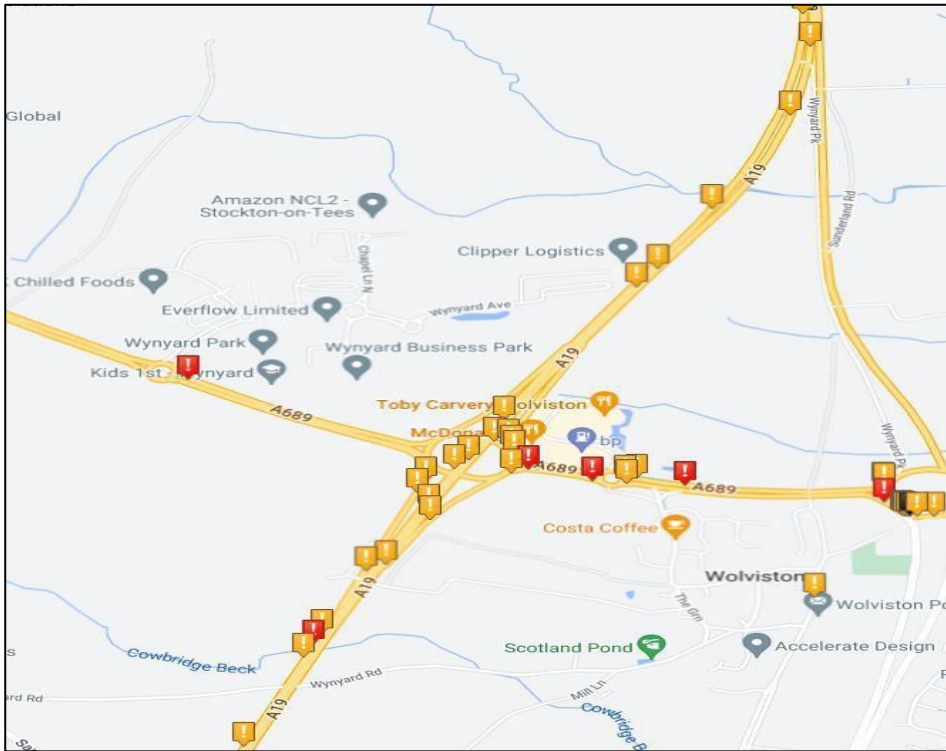
1.1.9 Plate 8 presents a negligible number of minor collisions on Durham Road between the years of 2015-2019.

Plate 8 Durham Road



1.1.10 Plate 9 shows the negligible number of collisions at the A19 Wolviston junction between 2015 and 2019.

Plate 9 A19 Wolviston



1.1.11 Plate 10 presents the small number of Minor and Severe collisions on the A689 between 2015 and 2019.

Plate 10 A689

